

freebee
in doral



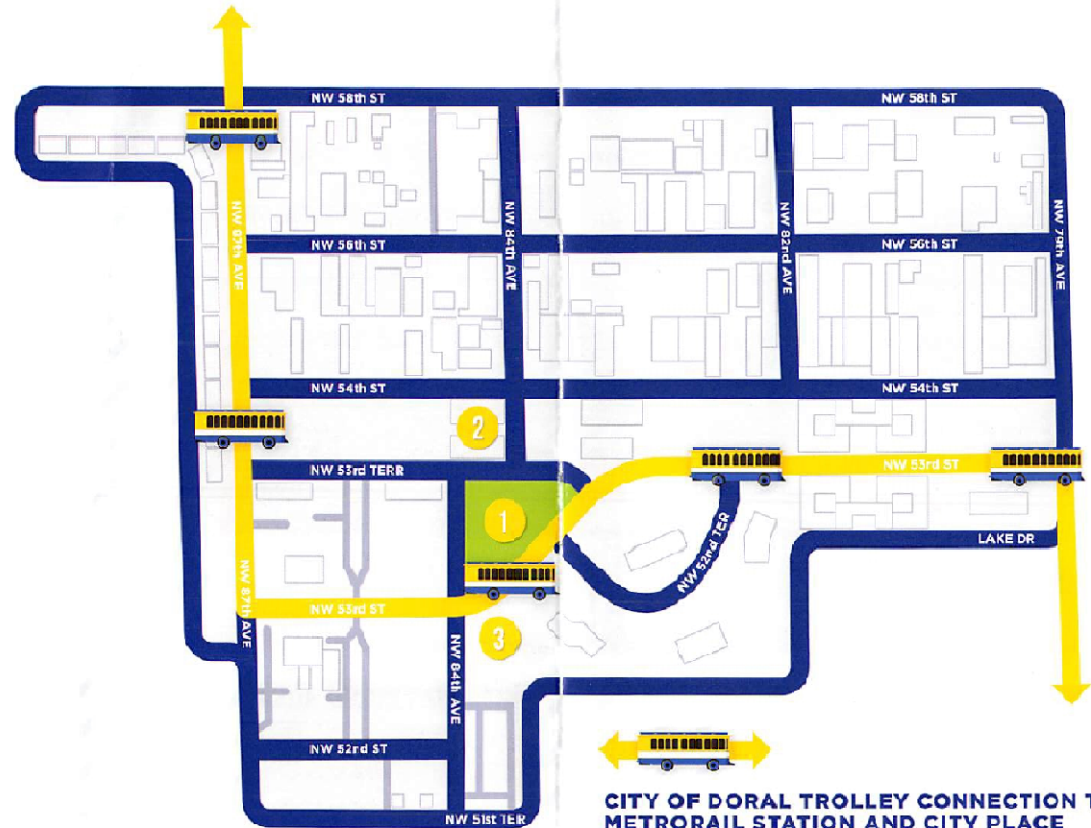
download
the
freebee
app now



A FUN, FREE & GREEN
ON-DEMAND SHUTTLE SERVICE

SERVICE AREA

PICK-UP / DROP-OFF ANYWHERE
WITHIN THESE BOUNDARIES



CITY OF DORAL TROLLEY CONNECTION TO METRORAIL STATION AND CITY PLACE

ROUTE 2 SERVICE HOURS
Weekdays 6:00am to 9:38pm
Saturdays 6:50am to 7:53pm
No Service on Sundays

For easy connections to the Palmetto Metrorail Station and City Place, Freebee will connect you to the closest City of Doral trolley stop along 53rd St.

POINTS OF INTEREST

- 1 Downtown Doral Park
- 2 City of Doral - Government Center
- 3 Downtown Doral Charter Elementary School

HOW IT WORKS

1



REQUEST A RIDE

Tap the "Request a Pickup" button on the home screen of the Ride Freebee app

2



SET YOUR PICKUP LOCATION

Drop your pin exactly where you would like to be picked up

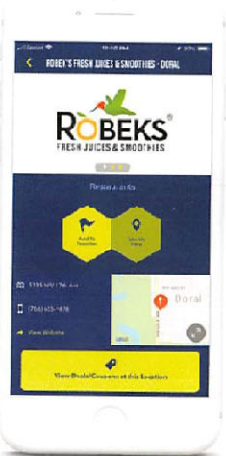
3



BROWSE OUR "PLACES TO BEE"

Search your destination by category and find the perfect spot with an awesome Freebee deal!

4



SELECT YOUR DESTINATION

Lock in your selection and let us know where you'd like to go!

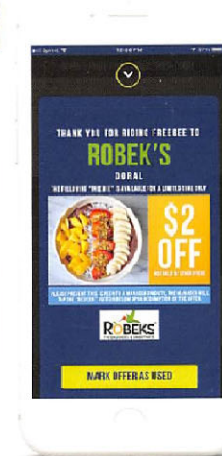
5



ENJOY THE RIDE

Snap some photos of your experience and share them to "The Hive"

6



REDEEM YOUR FREEBEE DEAL

Once you've reached your destination, present your app deal to the manager on duty. "Mark Offer As Used" to redeem!

SERVICE HOURS

MONDAY - FRIDAY

11am - 7pm

FREEBEE INFORMATION

- Freebee is a **FREE**, door-to-door, on-demand transportation service, brought to you by the City of Doral!
- Freebee vehicles are **100% electric**, and emission-free!
- Your Freebee guide will share with you the latest and greatest happenings in the City of Doral.
- Freebee caters to any and all ages, from children to seniors, and all types of pets.
- Freebee provides booster seats as appropriate for children who exceed the size requirements to travel in a car seat.
- Smaller children and infants are required to be secured in a federally approved car seat, provided by their parent or guardian.

 facebook.com/ridefreebee

  [@ridefreebee](https://twitter.com/ridefreebee)

 info@ridefreebee.com

 support@ridefreebee.com

If ADA assistance is needed, please contact Freebee in Doral at 305.216.9819

